

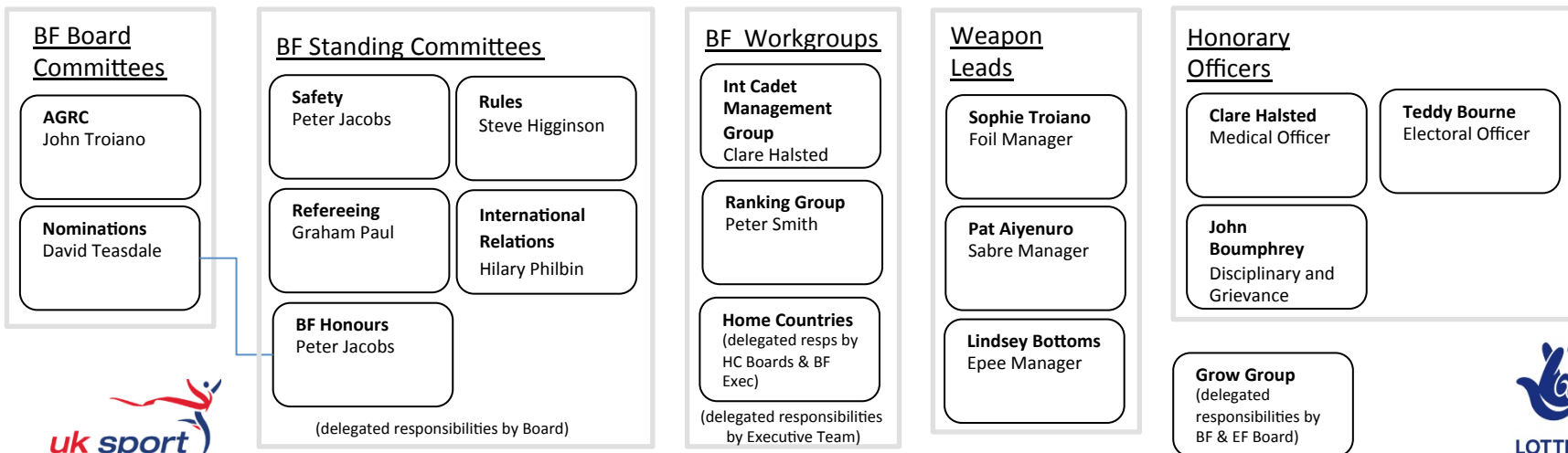
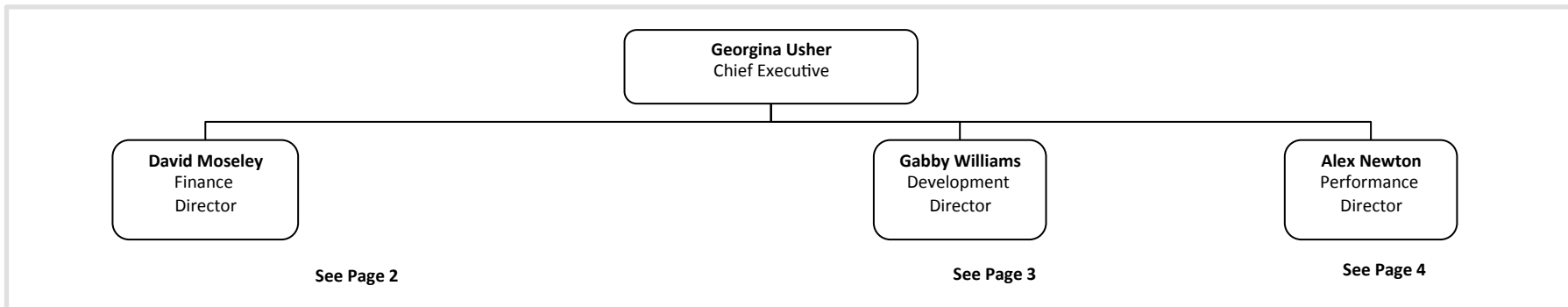
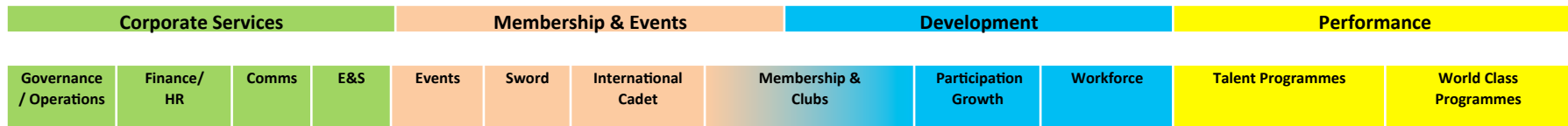


# British Fencing Org Chart - May 2016



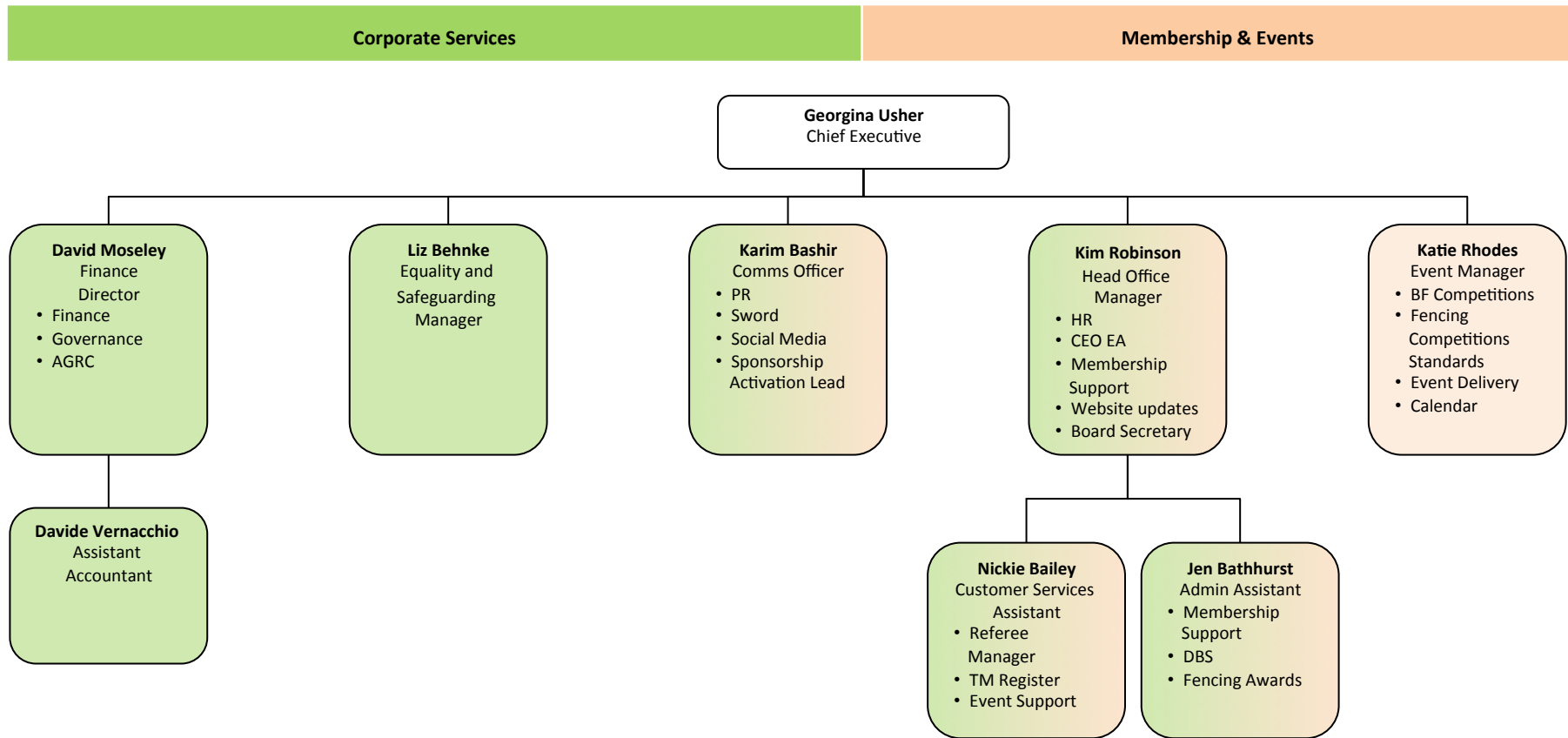
BRITISH FENCING

**British Fencing Board:** DAVID TEASDALE (CHAIR), PAUL ABRAHAMS, THOMAS CADMAN, JANET CAMPBELL, CLARE HALSTED, PAUL WEDGE, JOHN TROIANO, GILL PALMER, BRIAN SPEIGHT, CARYL OLIVER





# Corporate & Membership Services



Last Updated: May 2016

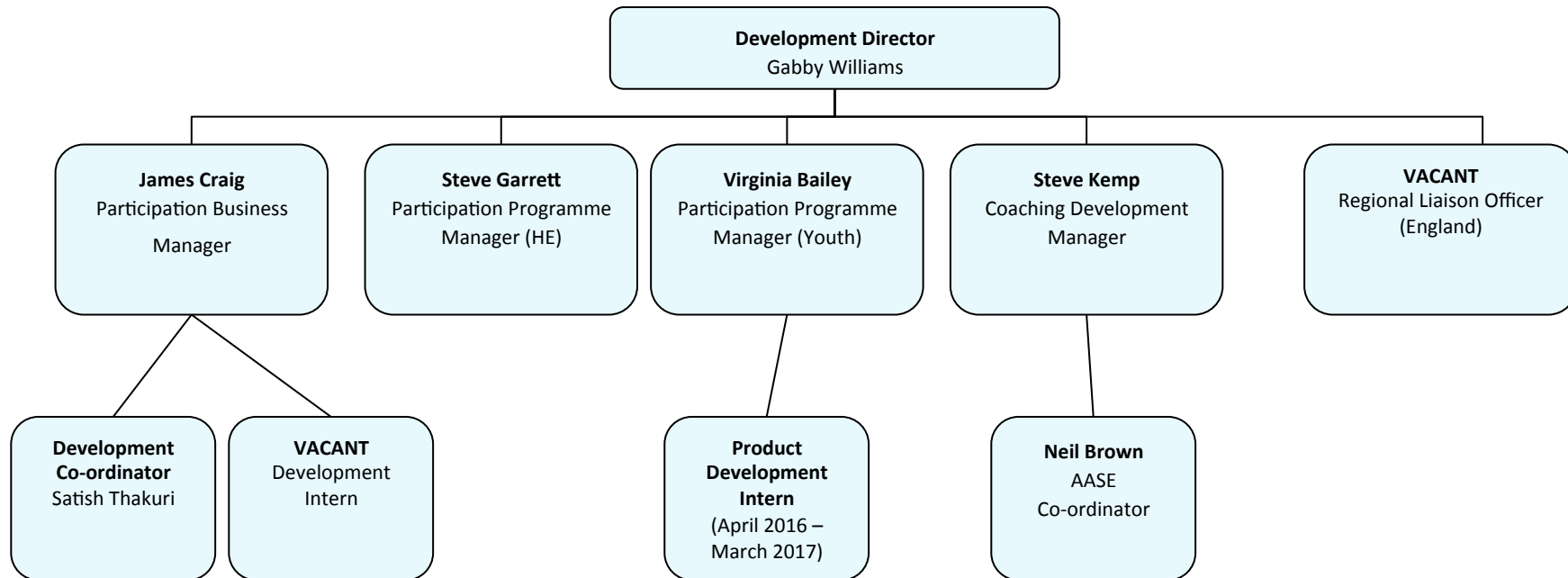




# Development Services



## Development



### CONTRACT STAFF (time limited)

Louise Voyce – Consultant (Programme Development) Summer 2016  
 Simon Tanner – Consultant (Research & Insight) Spring 2016  
 Sarah Rowell – Coaching Development Programme Advisory (WCP & Talent)  
 Various coaches & tutors to assist with product development and programme delivery



Last Updated: May 2016

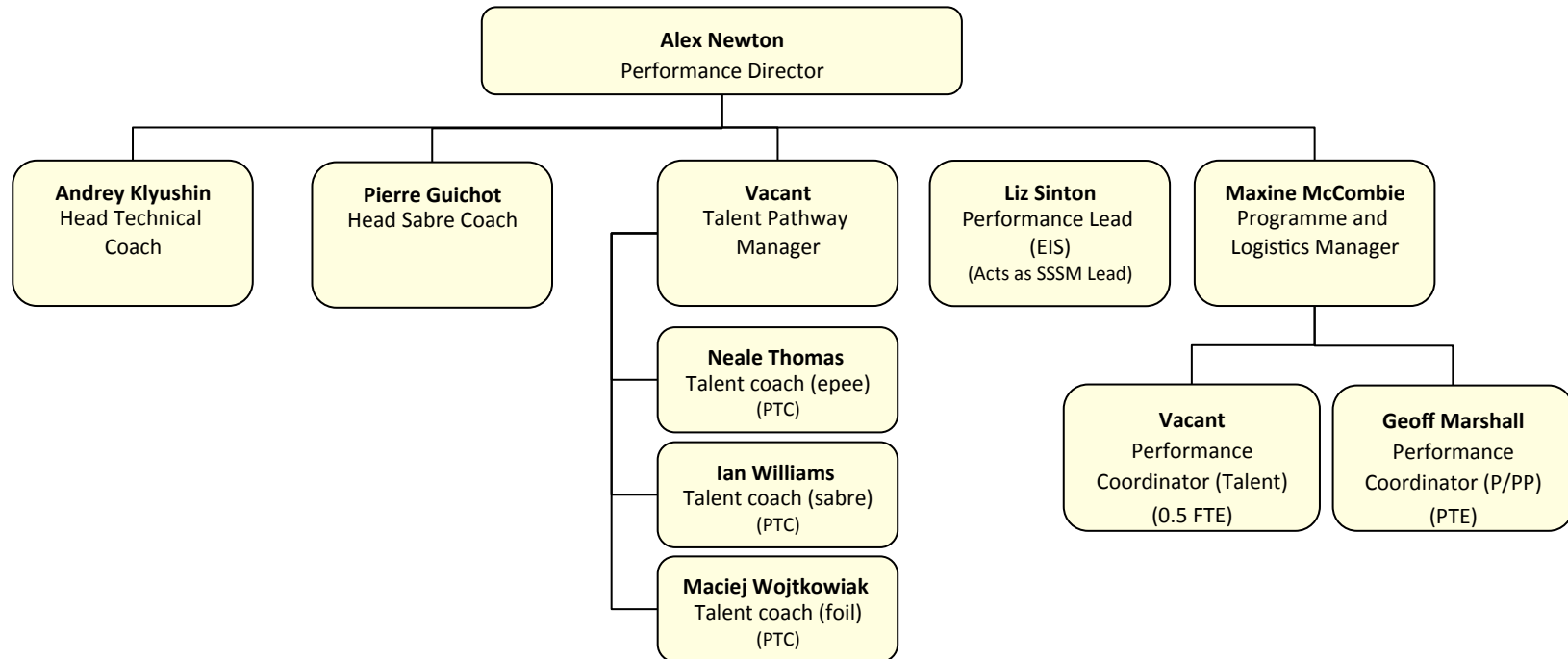




# World Class Performance



## WCP



### SUPPORT STAFF

**Medical** – Dr Moiz Moghal (EIS)

**Physiotherapy** – Sophie Weaver (Head), Sarah Wilkins (EIS)

**Massage Therapist** - Maria Goriup (EIS)

**Performance Analysis** – David Fulcher (Head),

**Performance Analysis Technician** – Sarah Henderson (EIS)

**Psychology** –Danielle Adams (EIS)

**Performance Lifestyle** – Natalie Campbell (EIS)

**Strength and Conditioning** –To be recruited within the EIS  
(Currently being undertaken by consultant - Geoff Marshall)

**Nutritionist** – To be recruited within the EIS



Last Updated: May 2016

