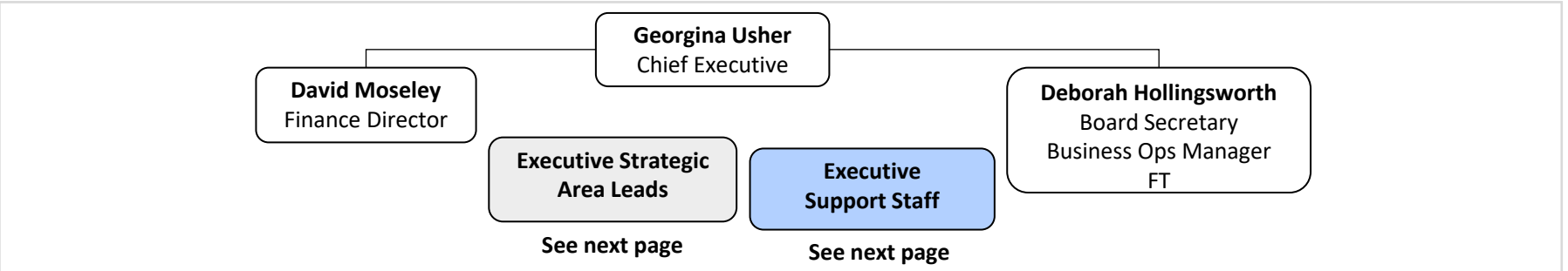


BRITISH FENCING - NOV 2022

British Fencing Board: MARK LYTTLE (CHAIR), PAT AIYENURO, TABATHA BARTON, TOMMY CURRAN JONES, YASHMIN HARUN, JAMES WILLIAMS, MARY COHEN, FRANCIS WILKINSON, JADE CLARKE, JOCHEN LOSCH, TOM MURRAY

| | | | | | | | | | | |
|-------------------------|-------------|-----------|-----|------------|--------|------------------------------------|---|----------------------|--------------------------------|---------------------------------|
| Head Office | | | | Commercial | Events | Membership & Community Development | | | GBR Pathways Development | |
| Governance / Operations | Finance/ HR | Mar Comms | E&S | | Events | Clubs & Region | Participation Retention & Growth Programmes | Workforce & Coaching | Athlete Development Programmes | International Pathway Framework |



- BF Board Committees**
- AGRC**
Francis Wilkinson
 - Nominations**
Mark Lyttle

- BF Standing Committees**
- Safety**
Peter Jacobs
 - Rules**
Steve Higginson
 - International Relations**
Hilary Philbin
 - BF Honours**
Peter Jacobs
 - Athlete Rep Panel**
 - Medical Committee**
Clare Halsted
- (delegated responsibilities by Board)

- BF Workgroups**
- BF Safeguarding Work Groups**
Liz Behnke
 - Home Countries**
(delegated resp by HC Boards & BF Exec)
 - Ranking Group**
Peter Smith
- (delegated responsibilities by Executive Team)

- Honorary & Exec Officers**
- Clare Halsted**
Medical Officer
 - Teddy Bourne**
Electoral Officer
 - John Boughrey**
Disciplinary and Grievance Chair
 - Pat Aiyenuro Karim Bashir**
International Liaison Officers
 - Vacant**
BF Calendar Administrator

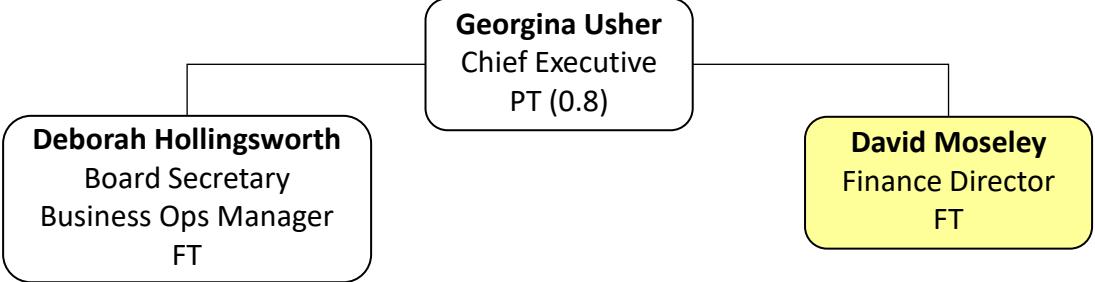


**HONESTY
RESPECT
EXCELLENCE**

BRITISH FENCING - NOV 2022

Employee
Contract

ADP = Athlete Development Programme
HE = Higher Education
PM = Project Manager
PO = Project Officer



Strategic Area Leads

| | | | |
|---|--|--|---|
| V Bailey Participation Director FT | Liz Behnke Lead Safeguarding Officer PT (0.8) | Steve Kemp Pathways Director FT | James Craig Commercial Director FT |
|---|--|--|---|

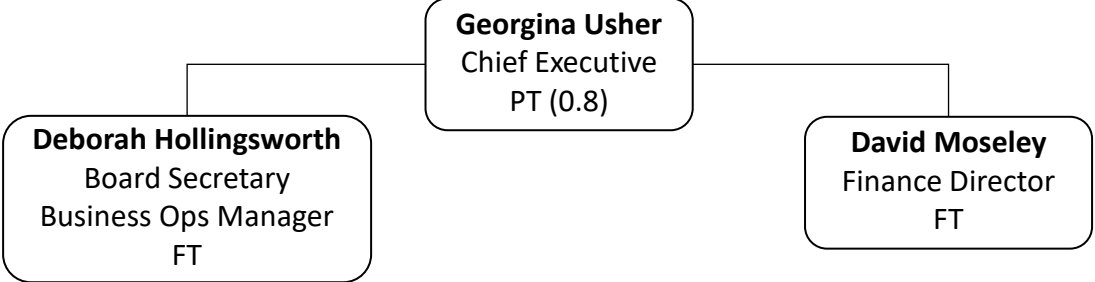
Functional Area Leads, Project Officers (PO) & Support

| | | | | | | |
|---|--|--|---|---|---|--|
| Hannah Gavin England Clubs, Regions & Membership PO FT | Reha Ullah P&P PM MGF PT (0.5) | Dusty Millar Head of People & Culture PT (0.5) | Johnny Davis ADP Weapon Lead (Foil) Head of Olympic Teams PT (0.8) | Sophie DeVooght Head of Comms FT | Harry Brown National Partnership & Engagement Mgr FT | |
| Rick Rogers P&P PO Inclusion PT (0.8) | James Cartwright P&P PO Community | Rob Cawdron ADP Weapon Lead (Sabre) ADP PM (Coaches, Insight) FT | Ian Lichfield ADP Weapon Lead (Epee) ADP PM (Univ, Pols & Procs) FT | Vacant Finance Manager PT | Marjorie Kuhne Commercial Officer FT | |
| Evie Millar Event Manager FT | Nickie Bailey Referee Manger (EF/BF) PT (0.4) | Lorraine Rose Workforce Development PO FT | Neil Brown ADP PO (Camps & DiSE) PT (0.8) | Karim Bashir Sword Mgr PT | Siân Hughes Pollitt Content Contributor PT | |
| Jon Willis Competition Manager PT | Samantha Hepple Membership Officer (BF) FT | Vacant ADP Weapon Lead (Wheelchair) PT | Shelley Robinson GBR Admin 1 FT | Niall Harman GBR Admin 2 FT | Heidi Januszewski Content Coordinator FT | Anna Ronzino Development Admin FT |

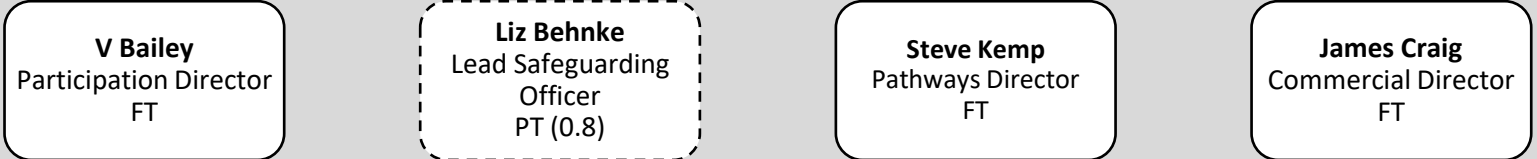
BRITISH FENCING - NOV 2022

Employee
Contract

ADP = Athlete Development Programme
HE = Higher Education
PM = Project Manager
PO = Project Officer



Strategic Area Leads



Functional Area Leads, Project Officers (PO) & Support

