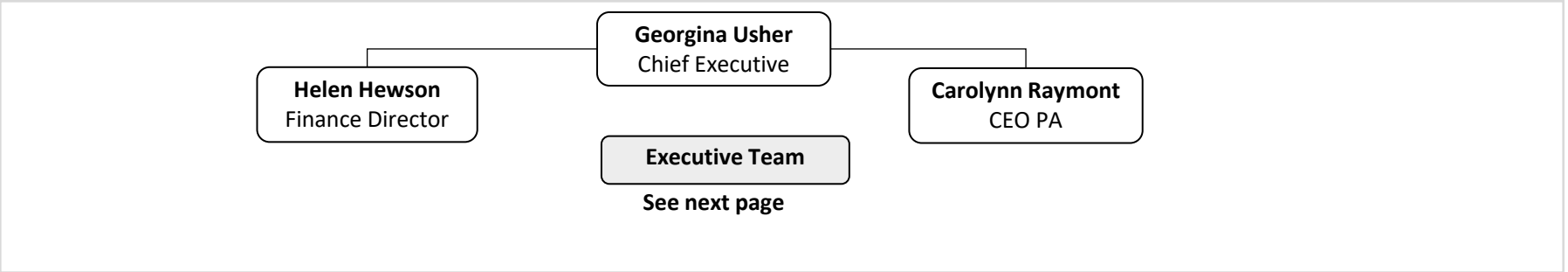


BRITISH FENCING - JUNE 2025

British Fencing Board: SARA PANTULIANO (CHAIR), TABATHA BARTON, BRIAN BRITTAIN, JADE CLARKE, MARY COHEN, TOMMY CURRAN JONES, YASHMIN HARUN, THOMAS NIPPRESS, ALEX O'CONNELL, CHRIS TIDMARSH, JOHN TROIANO

Head Office				Partnerships	Events	Membership & Community Development			GBR Pathways Development	
Governance / Operations	Finance/ HR	Mar Comms	E&S	Education, Leisure & Commercial	Events	Clubs & Region	Participation Retention & Growth Programmes	Workforce & Coaching	Athlete Development Programmes	International Pathway Framework



BF Board Committees

AGRC
Jade Clarke

Nominations
Sara Pantuliano

BF Standing Committees

Safety
Peter Jacobs

Rules
Steve Higginson

International Relations
Pat Aiyenuro

BF Honours
Pat Aiyenuro

Athlete Rep Panel

Medical Committee
Clare Halsted

(delegated responsibilities by Board)

BF Workgroups

BF Safeguarding Work Groups
Liz Behnke

Home Countries
(delegated resp by HC Boards & BF Exec)

Ranking Group
Peter Smith

Environmental Sustainability Group
Clare Halsted

(delegated responsibilities by Executive Team)

Honorary & Exec Officers

Pat Aiyenuro
President

Teddy Bourne
Electoral Officer

John Bumphrey
Disciplinary and Grievance Chair

Hilary Philbin
International Relations Director

Clare Halsted
Medical Officer

Vacant
BF Calendar Administrator

BRITISH FENCING - JUNE 2025

Senior Management and Dept Heads

V Bailey
Participation Director
FT

Georgina Usher
Chief Executive
PT 0.8

Helen Hewson
Finance Director
PT 0.6

Liz Behnke
Lead Safeguarding Officer
PT 0.8

Matt Hammond
Head of GBR Performance
Development
Paralympic Programme Lead
PT 0.8

Dusty Miller
Head of Coaching &
Workforce/Performance Coaching
Olympic Programme Lead
PT 0.5

Harry Brown
Head of Partnerships (Education,
Leisure & Commercial)
FT

Sophie DeVooght
Head of Media &
Communications
PT 0.6

Ian Lichfield
Head of GBR Ops,
Data & Logistics
FT

Sarah Jones
Head of Talent
FT

Managers, Officers & Admin Support

Evie Millar
Membership,
Clubs & Events
Manager
FT

Sophia Jones
Customer
Support
Manager
PT 0.6

Niall Harman
GBR Support
FT

Neil Brown
Pathway
Officer
(Camps &
DiSE)
PT 0.8

Glen Golding
Assistant
Performance
Coach
PT 0.6

Chris Turner
Coaching &
Workforce
Mgr
FT

Vacant
Partnerships
Manager
FT

Heidi Januszewski
Media &
Comms
Officer
FT

Gabriella James
Finance
Controller
FT

Abigail Dicks
Membership &
Events
Manager
FT

Rick Rogers
P&P Manager
Inclusion
(Disability)
PT 0.8

Denise Johnson
GBR Support
FT

Vacant
Pathway
Admin
(Camps &
DiSE)
FT

Grace Batey
Performance
Athlete
Support
FT

Vacant
Digital
Learning
Manager
FT

Anna Ronzino
Commercial
Officer
FT

Rosie McNally
Comms
Admin
FT

Natalie Worgan
Finance
Officer
PT 0.9

Samantha Hepple
Membership &
Events Officer
FT

Carlene Patrick
GBR Support
FT

Lorraine Rose
Workforce
Officer
FT

Giulia Enright
Commercial
Admin
FT

Non staff supporting roles

Jon Willis
Competition
Manager

Nat Lewis
GBR Pathway
Support (Para)

Fran Whalley
GBR Pathway
Support (Sabre)

Ben Peggs
GBR Pathway
Support (Foil)

UKSI
Performance
Support Lead
FT

UKSI
Support Team -
SS&M/Admin

Pat Aiyenuro
Olympic Team
Manager

Carolynn Rayment
PA Support
PT