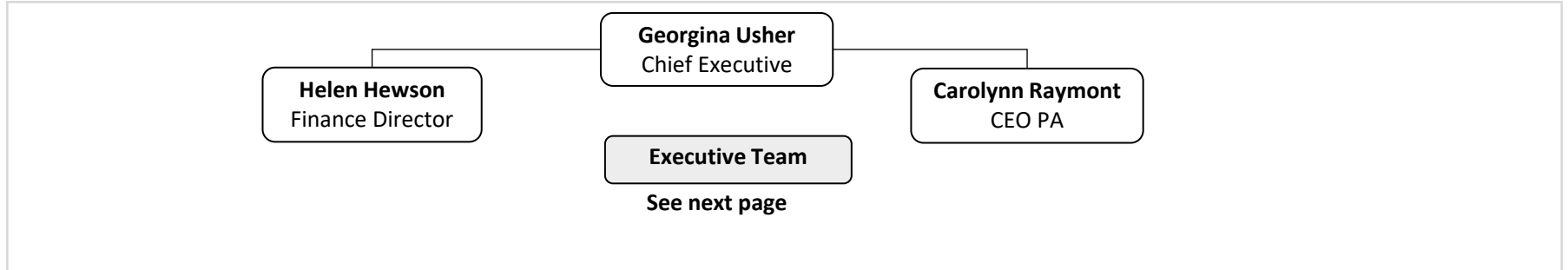


BRITISH FENCING - APRIL 2026

British Fencing Board: SARA PANTULIANO (CHAIR), PAUL ABRAHAMS, TABATHA BARTON, BRIAN BRITTAIN, JADE CLARKE, TOMMY CURRAN JONES, YASHMIN HARUN, THOMAS NIPPRESS, ALEX O’CONNELL, NICK PAYNE, CHRIS TIDMARSH, JOHN TROIANO

Head Office				Partnerships	Events	Membership & Community Development			GBR Pathways Development		
Governance / Operations	Finance/ HR	Mar Comms	E&S	Education, Leisure & Commercial	Events	Clubs & Region	Participation Retention & Growth Programmes	Workforce & Coaching	Athlete Development Programmes	International Pathway Framework	



- BF Board Committees**
- AGRC**
Jade Clarke
 - Nominations**
Sara Pantuliano

- BF Standing Committees**
- Safety**
Peter Jacobs
 - Rules**
Steve Higginson
 - International Relations**
Pat Aiyenuro
 - BF Honours**
Pat Aiyenuro
 - Athlete Rep Panel**
 - Medical Committee**
Clare Halsted
- (delegated responsibilities by Board)

- BF Workgroups**
- BF Safeguarding Work Groups**
Liz Behnke
 - Home Countries**
(delegated resp by HC Boards & BF Exec)
 - Ranking Group**
Peter Smith
 - Environmental Sustainability Group**
Clare Halsted
- (delegated responsibilities by Executive Team)

- Honorary & Exec Officers**
- Pat Aiyenuro**
President
 - Teddy Bourne**
Electoral Officer
 - John Bumphrey**
Disciplinary and Grievance Chair
 - Hilary Philbin**
International Relations Director
 - Clare Halsted**
Medical Officer
 - Vacant**
BF Calendar Administrator



**HONESTY
RESPECT
EXCELLENCE**

BRITISH FENCING - APRIL 2026

Senior Management and Dept Heads

Paul Cummins
Participation Director
FT

Georgina Usher
Chief Executive
PT 0.8

Helen Hewson
Finance Director
PT 0.6

Liz Behnke
Lead Safeguarding Officer
PT 0.8

Matt Hammond
Head of GBR Performance
Paralympic Programme
PT 0.8

Dusty Miller
Head of GBR Performance
Olympic Programme and
Performance Coaching Lead
FT

Harry Brown
Head of Partnerships
(Education, Leisure &
Commercial)
FT

Sophie DeVooght
Head of Media &
Communications
FT

Ian Lichfield
Head of GBR Ops,
Data & Logistics
FT

Sarah Jones
Head of Talent
FT

Chris Turner
Head of Coaching &
Workforce
FT

Managers, Officers & Admin Support

Chris Bryden
Clubs
Development
Officer
FT

Sophia Jones
Customer
Support
Manager
PT 0.6

Niall Harman
GBR Support
FT

Neil Brown
Pathway
Officer
(Camps &
DiSE)
PT 0.8

Glen Golding
Lead
Performance
Coach
FT

**Abhishek
Sudhakar**
Digital
Learning
Manager
FT

**Jessica
Pearce**
Partnerships
Manager
PT 0.8

**Heidi
Januszewski**
Media &
Comms
Officer
FT

**Shanti Budha
Magar**
Finance
Manager
FT

Abigail Dicks
Membership &
Events
Manager
FT

Rick Rogers
P&P Manager
Inclusion
(Disability)
PT 0.8

**Denise
Johnson**
GBR Support
FT

Susy Davies
Pathway
Coordinator
FT

Nat Lewis
Assistant
Performance
Coach
PT 0.6

Lorraine Rose
Workforce
Officer
FT

**Olivia
Harper**
Commercial
Officer
FT

**Natalie
Worgan**
Finance
Officer
PT 0.9

**Samantha
Hepple**
Membership &
Events Officer
FT

**Carlene
Patrick**
GBR Support
FT

**Dan
Robinson**
Performance
Athlete
Support
FT

Ben Peggs
Assistant
Performance
Coach
PT 0.6

**Giulia
Enright**
Commercial
Admin
FT

Non staff supporting roles

Jon Willis
Competition
Manager

UKSI
Performance
Support Lead
FT

UKSI
Support Team -
SS&M/Admin

Pat Aiyenuro
Olympic Team
Manager

Carolynn Rayment
PA Support
PT